

**DOWNTOWN BREAKFAST CLUB
MEMBER**

JOHN BARRETT
Coopers & Lybrand

NICHOLAS BLACKBURN

ED CASEY, ESQ.
McClintock Weston Renshoff

GARY ERICKSON
The Erickson Group

WILLIAM FAIN
Johnson Fain & Pereira Associates

BILL FEATHERS
Feathers Consulting

LIZ HARRISON
Harrison Properties

JOHN HENDRICKS
Union Bank of California

MICHELLE ISENBERG
Isenberg & Associates

FRANK JANSEN
Chicago Title

FRITZ KASTNER
Stegeman & Kastner, Inc.

LYNN KIOUS
First Interstate Bank of California

STUART LAFF
First Interstate Bank of California

SUE LARIS-EASTIN
Downtown News Group

N. RICHARD LEWIS
Lewis & Associates

LAUREN MELÉNDREZ
Meléndrez Associates

FRED MERRITT
The Seeley Company

DAVID PROSSER
Westfall Interior Systems

SAM ROSS
Crain & Associates

COLIN SHEPHERD
Hines Interests Ltd., Partnership

RICHARD STANSON
L.A. Orthopaedic Hospital Foundation

ROBERT STEWART
Stewart/Romberger & Associates

RANDY VILLARREAL
The Biltmore Hotel

TOM WESTFALL
Westfall Interior Systems

JOHN WHITAKER, ESQ.
Pillsbury Madison & Sutro

JIM WILLIAMS
Cannon Constructors

JANE WINGFIELD, ESQ.
Gibson, Dunn & Crutcher



16th Annual

**ROSES AND LEMONS
AWARDS BREAKFAST
1996**

**THURSDAY, APRIL 11TH
THE BILTMORE HOTEL
LOS ANGELES**

WELCOME

Fritz Kastner

PROGRAM CO-CHAIRS

Michelle Isenberg

Lauren Meléndrez

SPECIAL AWARD – STEVE GAVIN

Liz Harrison

PRESENTATION OF ROSE AWARDS

Bob Stewart

Nick Blackburn

Bill Fain

John Whitaker

Sue Laris-Eastin

Michelle Isenberg

Lauren Meléndrez

The Downtown Breakfast Club is an organization of professionals whose main purpose is to recognize, foster and encourage the orderly and planned growth of Downtown Los Angeles. The group consists of individual representatives of all the major fields of development: real estate, banking, international investment groups, architects and engineers, urban planners, investment brokers, insurance development organizations and governmental agencies. Meeting on a bi-monthly basis, the group maintains a profile of current business activity through featured guest speakers as recruited by its members. This type of professional interface encourages and supports sound principles of developing a better quality of life for Downtown Los Angeles.

I. STRUCTURES

Gateway Transit Center

II. RESIDENTIAL PROJECTS

Grand Central Apartments

Norbo Hotel

Produce Hotel

Villa de Pueblo

III. RENOVATIONS

Angels Flight

IV. CIVIC/PRIVATE COMMITMENT

Broadway Theaters District Study

Downtown Cultural Trust Fund

South Park Development Strategies and

Design Guidelines

V. EVENTS

444 Volleyball Tournament – “Beach Week”
Oktoberfest

Cal Plaza Event Series – 10th Anniversary

VI. PUBLIC ART

“Angels” by Jill D’Agnenica

MOCA at the Temporary Contemporary Re-

Opening: Streb/Ringside’s “ACTION

OCCUPATION Performances” and “1965-1975

Reconsidering the Object of Art”

Union Station Gateway Inermodal Transit

Center and MTA Headquarters

VII. GOOD IDEAS, WE’D LIKE TO SEE MORE

Angels Walk

Arroyo Seco Bicycle Freeway

Fashion District Business Improvement District

PRESENTATION OF LEMON AWARD

Howard Reback

ADJOURNMENT

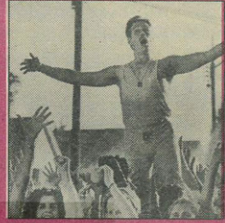
The Downtown Breakfast Club has its own web site:
<http://quin.com/roselemon.html>

LOS ANGELES DOWNTOWN NEWS

Volume 25, Number 16

April 15, 1996

MOVIE REVIEW

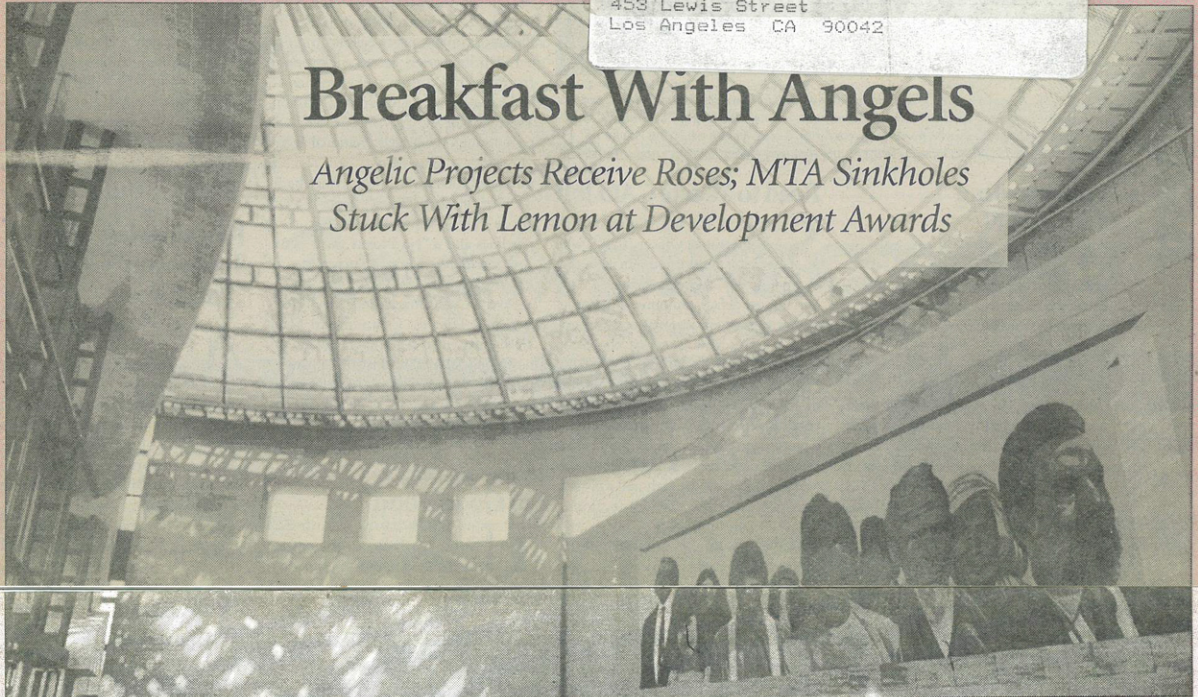


The Kids in the Hall's
Scott Thompson
comes out in
'Brain Candy'
13

Melendrez Associates
Melendrez, Lauren
453 Lewis Street
Los Angeles CA 90042

Breakfast With Angels

*Angelic Projects Receive Roses; MTA Sinkholes
Stuck With Lemon at Development Awards*



Dome Alone: The Gateway Transit Center, including the East Portal, won an award for Best New Structure.

by Jack Skelley

Angels were metaphorically flying at the Downtown Breakfast Club Roses and Lemon awards last Thursday at the Biltmore Hotel. The annual event, which honors the best—and chides the worst—of Downtown developments, saw "Rose" awards going to three angel-themed projects: Angels Flight funi-

ular, Angels Walk pedestrian plan and City of Angels art installation.

■ DOWNTOWN DEVELOPMENT

The Breakfast Club bestowed a chastising "Lemon" to the Metropolitan Transportation Authority (MTA) for its "shoddy contract administration performance" in relation

to Red Line subway construction.

That criticism of the MTA was perhaps counterbalanced by the club's top design award—"Best New Structure"—going to the public agency's new, \$300 million headquarters and Gateway Transit Center, developed jointly with Catellus Development Corp. The Center, whose ambitious

Continued on page 8

Angeles—and a hopeful symbol of the renewal of Downtown.”

Accepting the award, CRA Board Chair Christine Essel, who is also a film industry executive, paraphrased Sally Field’s famous Academy Awards speech, saying, “It’s great to know that you really really like us.”

As for the “Lemon” award chiding the MTA’s construction scandals, presenter Howard Reback offered tart rejoinders to the public agency, noting how subway construction has so far had the opposite effect of revitalizing the city, mostly due to contractual excesses such as cost overruns or inadequate oversight. He offered a litany of abuses includ-

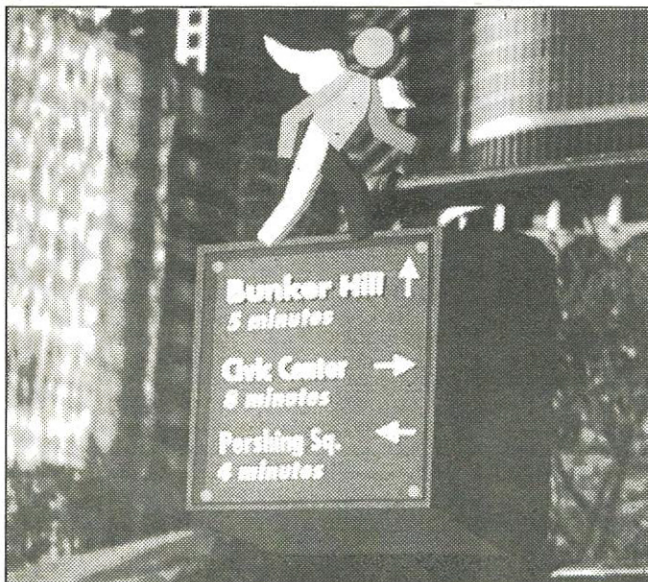
Club Web

The Downtown Breakfast Club is an organization whose purpose is to “recognize, foster and encourage the orderly and planned growth of Downtown Los Angeles.” The club, whose members come from the fields of real estate, banking, investment, architecture, publishing, engineering, urban planning, investment brokerage, insurance development and government, has just established its own electronic web site. The address is <http://quin.com/roselemon.html>. Downtown News is providing the web site which will be “under construction” this week. Check back with the site for Breakfast Club updates.

ing sinking sidewalks, tunnel thickness problems, federal withholding of funds and, of course, the infamous sinkhole in Hollywood, a result of “substandard materials.”

As Reback put it, “The MTA contract administration group has taken us for the ride of the century.”

Other awards—all complimentary—went to the low-income family housing Villa del Pueblo (“Best Low-Income Residential Project”); the neighborhood planning study known as South Park Development Strategies and Design Guidelines (“Best Civic/Private Commitment”); and the popular California Plaza Event Series which draws up to 5,000 for a single concert (“Best Event”).



Pathfinder: Angels Walk pedestrian plan received the commendation: “Good Ideas, We’d Like to See More.”

Roses & Lemon

Continued from page one

art program was also nominated for "Best Public Art" project, drew praise from Fritz Kastner, club chairman, who said, "As Los Angeles becomes increasingly the focus of international business and tourism, Gateway Center is going to emerge as a major landmark of the city."



Viva la Villa: The Residential award went to the low-income family housing project, Villa del Pueblo.

The Gateway Center award was one of two paying tribute to the efforts of MTA Alternate Board Member Nick Patsouras, whose Angels Walk plan received the commendation of "Good Ideas, We'd Like to See More." In accepting that award for the pro-



photo by Gary Leonard

Downtown Breakfast Club member Elizabeth Harrison displays the one award that no one ever accepts—the Lemon—which this year went to the MTA's contract scandals.

ject, which is funded by the MTA and seeks to unify the diverse neighborhoods of Downtown through pedestrian linkages, Patsouras said, "Angels Walk has been accepted as part of the vision of Downtown."

The other two angel-themed awardees were artist Jill D'Agnew's City of Angels installation ("Best Public Art"), in which D'Agnew placed 4,687 magenta plaster angels throughout the city, and Angels Flight ("Best Renovation"), in which the Community Redevelopment Agency (CRA) took the lead in reviving the elegant tourist attraction, the "world's shortest railway" connecting Bunker Hill with the Historic Core.

Angels Flight, said Kastner, "is a reminder of a more gracious era in Los